

# M3 Complete User Guide

(Applicable to firmware version 1.5 and later)



## Foreword

Thank you for purchasing FiiO's M3, our micro-sized 96kHz/24bit lossless music player. To let you better utilize the M3 to enjoy high-quality music, we have prepared this complete user manual and answered some frequently asked questions by users. We hope this manual will help you get to know the M3 and unleash its full potential.

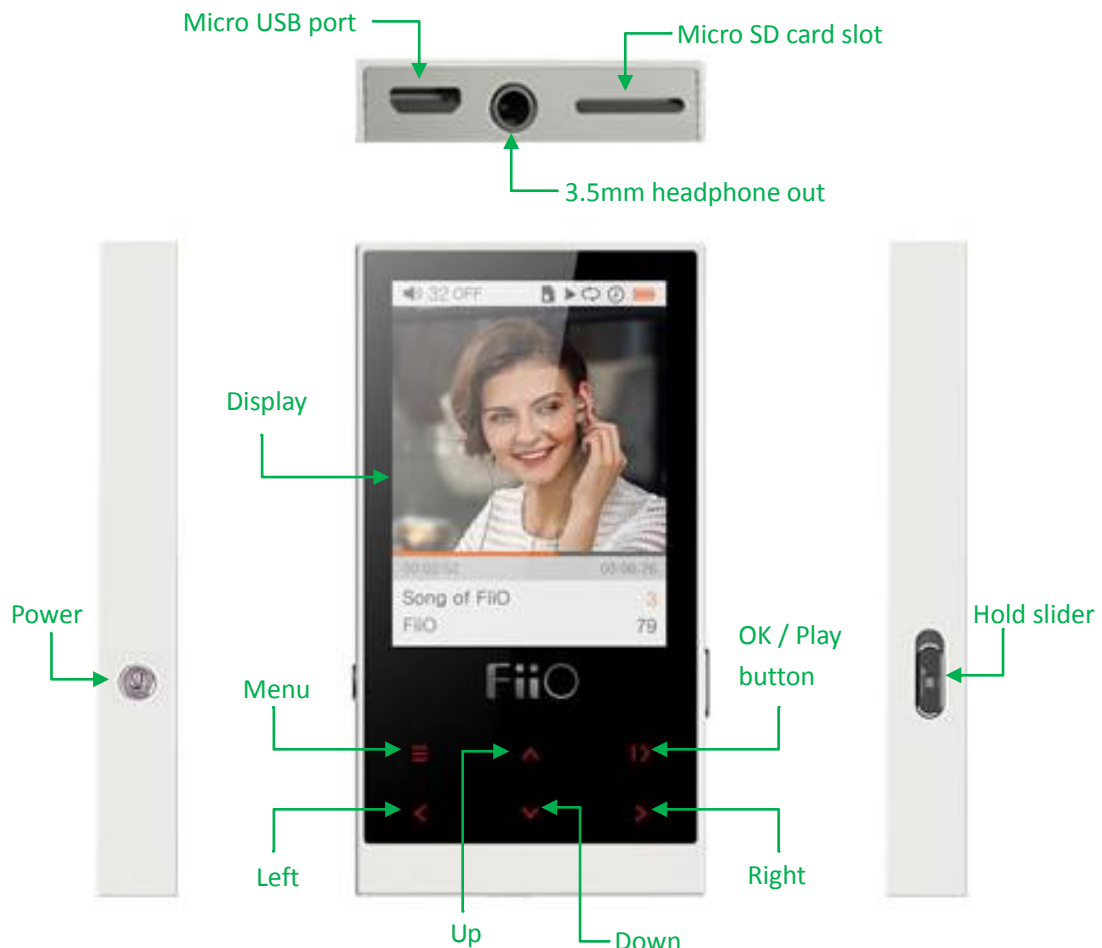
## Contents

A.	Introduction .....	3
B.	Buttons and ports explained .....	3
C.	Firmware Updates .....	4
D.	Menu operation (pictorial guide).....	6
	1. Categories Menu.....	6
	2. Quick Menu.....	1
	3. Custom EQ .....	8
E.	Menu operation (textual guide) .....	8
	1. Powering on and off .....	8
	2. Now Playing interface .....	8
	3. Categories Menu .....	9
	4. Quick Menu .....	9
	a. Play Mode.....	9
	b. Add to playlist.....	9
	c. Equalizer .....	9
	d. Song info.....	10
	e. Delete .....	10
	f. Settings.....	10
	5. Settings.....	11
	a. Play settings.....	11
	b. System settings.....	12
F.	Tips on Usage .....	15
G.	FAQ .....	16
	1. Charging .....	16
	2. Transferring songs .....	17
	3. Firmware updates .....	18
	4. Storage .....	19
	5. Playing music.....	20
	6. Other operations.....	21

## A. Introduction

The M3 is a HiFi-class digital audio player, supporting lossy and lossless music formats including MP3, WAV, WMA, APE, FLAC, and Ogg Vorbis. A maximum sample rate of 96kHz/24bit is supported and other features include CUE sheet support, playlist support and auto sleep / shutdown. The following sections are an illustrated guide to using the M3.

## B. Buttons and ports explained



1) Display: 262k color 240x320 TFT LCD displays user interface and other info

- 2) Menu button: Press briefly in Now Playing screen to show Categories menu;  
Hold in Categories Menu or Now Playing screen to show Quick menu;  
Hold in any music listing to show operations menu;  
Press briefly within any menu to go back up a menu level
- 3) OK / Play button: Press briefly in Now Playing to play / pause music;  
Press briefly in any menu or listing to enter submenu / select item / perform chosen action
- 4) Left: Press briefly in Now Playing to skip to previous track;  
Hold in Now Playing to rewind
- 5) Right: Press briefly in Now Playing to skip to next track;  
Hold in Now Playing to fast forward
- 6) Up: Press briefly in Now Playing to increase volume by 1;  
Hold in Now Playing to continue increasing volume;  
Press briefly in any menu or listing to move selection highlight Up
- 7) Down: Press briefly in Now Playing to decrease volume by 1;  
Hold in Now Playing to continue decreasing volume;  
Press briefly in any menu or listing to move selection highlight Down
- 8) Power: Hold down while M3 is powered off to turn on M3;  
Hold down while M3 is powered on to turn off M3;  
Press briefly while M3 is powered on to turn display on/off
- 9) Hold slider: Slide up along arrow to lock buttons;  
Slide down along arrow to unlock buttons
- 10) 3.5mm headphone out: Headphone port for headphones with 3.5mm jacks.  
Also supports most inline headphone remotes;  
Remote function on supplied earphones:  
Press once: Play / pause  
Press twice: Next track  
Press 3 times: Previous track
- 11) Micro USB port: For data transfer and charging the M3
- 12) Micro SD card slot: Supports micro SD cards of up to 64GB capacity
- 13) Lanyard lug: For strapping on supplied lanyard.

## C. Firmware Updates

Firmware updates may update the player with new features and optimize the playback experience; not upgrading to the latest firmware does not affect current operation of the unit. The unit supports firmware upgrades via update files loaded into the internal memory of the M3. Improper operation during firmware updates may cause the unit to malfunction! Please read the following instructions for firmware updates carefully before proceeding.

Before updating:

1. Please ensure that the M3 is adequately charged, preferably fully charged, before updating the firmware, to prevent loss of power during the update.
2. You can only enter the shortcuts menu and from there the settings menu and the firmware update option by holding the menu button from the Now Playing screen. Therefore, please load the M3 with at least one song and play a song before attempting to update the M3.
3. You may go to Settings->Player information (on last page) to check the firmware version of the M3.

To update the M3's firmware:

1. Extract and copy M3.hex to the root directory of the internal storage of the M3.
2. While playing a song on the M3, in the Now Playing screen, hold the menu button (upper left button on main panel) to open the shortcuts menu; choose and select the cog icon at the bottom to enter settings menu; click "up" once to choose "Auto upgrade" at the end of the System settings menu and select it to update the firmware, select the tick to confirm; the following screens will appear while the update is in process.



- Do not push the M3's buttons while the update is in process.
3. The M3 will update its firmware and then reboot.
  - It is normal for the first reboot after the update to take longer than usual.
4. Choose your preferred language for the M3 again.

Notes:

1. Songs / data in internal storage would not be deleted by firmware update process.
2. If the internal storage had been reformatted by a connected computer, update may fail. To solve this problem, reformat the internal storage using the Settings->Format internal memory option on the M3. Please back up data / songs in the internal memory first as formatting deletes all data there.

# D.Menu operation (pictorial guide)

## 1. Categories Menu

To enter Categories menu: press Menu button briefly in Now Playing screen

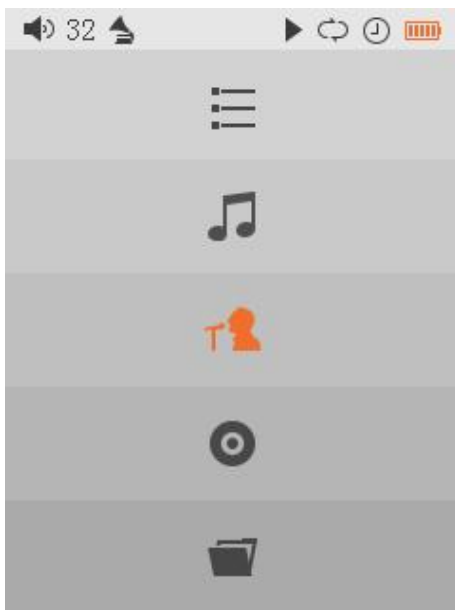
Button usage guide:

Menu: Press to show menu / back up one menu level; Hold in music listing to show operations menu

OK/Play: Enter submenu / perform action

Up / Down: Move selection highlight up / down

e.g. Up/Down to choose a category type and OK to enter its category listing



Status bar legend

- 1—Volume icon
- 2—Volume level value
- 3—Present equalizer mode
- 4—Micro SD card
- 5—Playback status
- 6—Play mode
- 7—Sleep timer
- 8—Battery indicator



**Playlists**  
Shows the 3 built-in playlists and playlists based on CUE sheets  
★Up/Down to choose a playlist  
★Press OK briefly to show playlist contents  
★Hold menu button while a playlist is chosen to show operations menu for chosen playlist.



**All Songs**  
Shows all songs loaded on M3  
★Hold menu button while a song is chosen to show operations menu for chosen song.



**Artists**  
Shows list of artists for loaded songs  
★Up/Down to choose an artist, OK to show list of albums by chosen artist  
→ ★Up/Down to choose an album, OK to show list of songs in chosen album  
★Hold menu button while an artist / album / song is chosen to show



**Albums**  
Shows list of albums in loaded songs  
★Up/Down to choose an album, OK to show list of songs in chosen album



**Folders**  
Shows music files according to folder structure  
★Up/Down to move selection highlight, OK to enter chosen drive / folder / play selected song

## 2. Quick Menu

To enter Quick menu: hold Menu button in Now Playing screen

Button usage guide:

Menu: Press to back up one menu level;

Hold in music listing to show operations menu

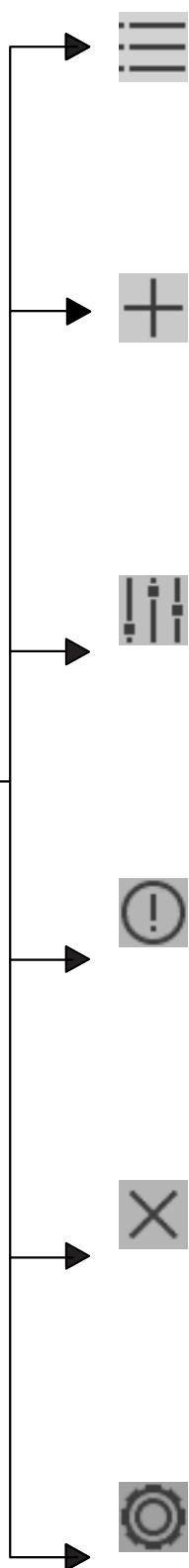
OK/Play: Enter submenu / perform action

Up / Down: Move selection highlight or slider up / down

Left / Right: switch between options for chosen item / move selection highlight left / right



- Status bar legend**
- 1—Volume icon
  - 2—Volume level value
  - 3—Present equalizer mode
  - 4—Micro SD card
  - 5—Playback status
  - 6—Play mode
  - 7—Sleep timer
  - 8—Battery indicator



**Play Mode**

Press OK to switch between

Sequential    Loop Single

Loop list    Shuffle

**Add to playlist**

★Press OK to add now playing song to a selected playlist

**Equalizer**

Press OK to show list of equalizer settings

★Choose and select “Custom” to show settings screen for Custom EQ

**Song info**

Press OK to show various info on the now playing song

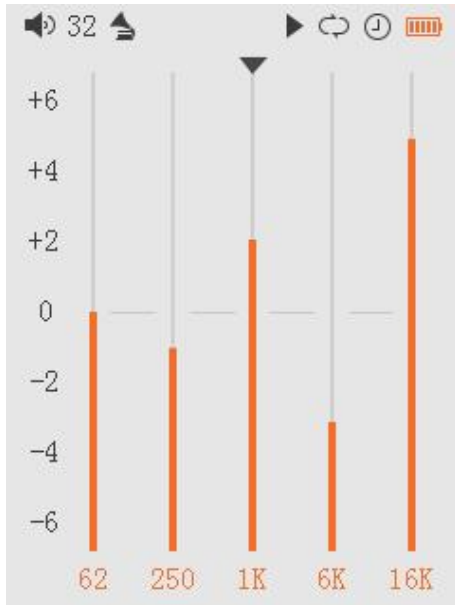
**Delete**

Select to delete now playing song (after confirmation dialog)

**Settings**

Press OK to enter settings menu (including play settings and system settings)

### 3. Custom EQ



The Custom EQ allows you to customize the response level at and around 5 set frequency bands to customize the sound output of the M3 to your personal tastes.

To operate:

Menu: Cancel changes and go back to Equalizer listing

OK: Save changes and go back to Equalizer listing

Up/Down: Increase / decrease response at selected frequency band

Left / Right: Change frequency selected for adjustment

## E. Menu operation (textual guide)

### 1. Powering on and off

Hold down the power button for two seconds and release it to turn on the M3 (language selection dialog would appear the first time the M3 is powered on);

While the M3 is powered on, hold down the power button for 3 seconds to turn off the player.

### 2. Now Playing Screen

The Now Playing screen is shown after power-on (except the first power-up after purchase / firmware update). From this screen:

Press Menu button briefly to show Categories menu /

Hold Menu button to show Quick menu;

Press / hold Up button to increase volume by 1 / continuously increase volume;

Press / hold Down button to decrease volume by 1 / continuously decrease volume;

Press left / right button briefly to skip to previous / next track;

Hold left / right button to rewind / fast forward current track;



Press OK button to pause / play the music.

### 3. Categories Menu

From Now Playing screen, press menu button briefly to enter Categories Menu.

There are 5 category types available: Playlists, All Songs, Artists, Albums and Folders.

Press Up/Down to choose a category type and OK to enter its category listing. From Categories Menu screen, hold the Menu button to enter Quick Menu. From Categories Menu screen, hold the Menu button to enter Quick Menu.

For details please refer to D. Menu operation (pictorial guide)—1. Categories Menu.

### 4. Quick Menu

From Now Playing screen, hold menu button to enter Quick Menu.

The 6 options shown are: Play mode, Add to playlist, Equalizer, Song info, Delete and Settings.

Press Up/Down to choose an option and OK to activate / change the option or enter its menus.

#### a. Play Mode

Play Mode refers to the way in which the M3 chooses the next song to play.

The M3 can choose between

 Sequential,  Loop Single,  Loop List and  Shuffle.

Press OK on the current Play Mode icon to switch between the 4 modes.

#### b. Add to playlist

Select this option to add the now playing song to a built-in playlist.

The 3 built-in playlists on the M3 are: Favorites, Playlist 1 and Playlist 2.

Press OK on this option to show the 3 playlists. Press Up / Down to choose between the 3 playlists and OK to add the now playlist song to the selected playlist.

To confirm the addition, press OK once more. To cancel, use Up / Down to choose “x” button in confirmation dialog or simply press the Menu button.

#### c. Equalizer

Select this option to change the equalizer effect applied to the M3's sound

output. The following options are available:

Off: No equalizer applied;

Built-in equalizers (fixed): Rock, Blues, Metal, Jazz, Classical, Electronic;

Custom: Custom EQ allows user-defined adjustments of the response level at and around the 5 frequency bands of 62Hz, 250Hz, 1kHz, 6kHz and 16kHz.

To operate the Custom EQ:

- 1) Use Up / Down to choose "Custom" from list of equalizers and press OK to select Custom EQ and show Custom EQ adjustment screen;
- 2) Press Left / Right to choose the frequency for which adjustment is desired
- 3) Press Up / Down to increase / decrease response at selected frequency band (range of adjustment from -6dB to +6dB)
- 4) Repeat (2) and (3) until all desired adjustments are made;
- 5) Press OK to save changes and go back to Equalizer listing (or press Menu to cancel changes and go back to Equalizer listing)

#### d. Song info

Select (press OK on) this option to display various info about the now playing song.

The info shown (from top to bottom) are as follows: file name, album name, artist name, genre name, bitrate, sample rate, file size, song duration, and number of channels.

Press the menu button to exit the info screen.

#### e. Delete

Select (press OK on) this option to delete the now playing song.

Confirmation dialog will appear, showing name of the song to be deleted. Cancel ("x") icon is selected by default. To cancel, choose "x" icon and press OK (or simply press Menu button).

To confirm deleting the song, use Up / Down button to choose "✓" icon and press OK to select.

➤ "Delete" deletes the song fully from the M3 and not just from any playlist the song may be in. Do not use unless you don't want to listen to this song on the M3 again.

#### f. Settings

Select (press OK on) this option to show the various other options for the M3 (as listed in "5. Settings" below) for review and adjustment.

## 5. Settings

The settings can be categorized into Play Settings and System Settings. These are shown together in one list, with Play Settings in the first page and System Settings in the 2<sup>nd</sup> and 3<sup>rd</sup> pages.

### a. Play settings

The 6 play settings options are: Resume mode, Fade In / Fade out, Max volume, Default volume, Balance and Preferred Display (Album or Lyrics).

#### 1) Resume mode

This option enables the M3 to remember the song being played and start playing from this song the next time the M3 powers off and back on. Press OK or Right to cycle through Off, Song and Position.

- Off: player does not resume playback after power on
- Song: on power on, player resumes playback from the start of the last song being played when player was powered off
- Position: on power on, player resumes playback from exactly where it was (same song, same position in song) when player was powered off

#### 2) Fade in / Fade out

This fades out (turns down volume gradually) the end of the currently playing track and then fades in (turns volume back up gradually) the next track. Press OK or Right to switch this Off or On. Default is On.

#### 3) Max volume

This adjusts the max volume at which the M3 would play music (e.g. for hearing protection). Available range is 30 to 60.

Press OK on this option to show adjustment slider, then press Up / Down to adjust slider and OK to save changes and return to settings menu (or press Menu to cancel).

➤ Adjustment range does not go down to 0; this is to avoid users from being unable to make the M3 make sound and mistake it for a malfunction.

#### 4) Balance

This adjusts the volume balance between left and right channels. Available range is from L10 (left side louder) to 0 (centered) to R10 (right side louder).

Press OK on this option to show adjustment slider, then press Up / Down to adjust slider and OK to save changes and return to settings menu (or press Menu to cancel).

#### 5) Default volume

This can be set to "Memory" or "Custom".

Memory: recalls the volume set when the player was powered off.

Custom: always powers on the player at the volume defined in "Fixed volume setting".

Press OK on this option and use Up / Down to choose between Memory and Custom and OK to select. If Custom is chosen, volume slider will appear. Press Up / Down to adjust power-on volume and OK to confirm (or Menu to cancel). Custom volume value will appear next to "Default volume" back in the settings menu.

➤ Default volume is subject to limitation by the Max volume.

#### 6) Preferred display

This decides whether Lyrics or Album (art) is shown in the Now Playing screen when both are available for the playing song.

Press OK or Right to choose between Lyrics and Album (art).

### b. System settings

#### 1) Language

The M3 supports 10 different languages: Simplified Chinese, Traditional Chinese, English, German, Spanish, French, Russian, Japanese, Korean and Thai.

Press OK on this option to show the language selection menu, Up / Down to choose your preferred language and OK to select the new language (or Menu to cancel).

## 2) Update Media Lib (Update Media Library)

The Media Library needs to be updated for songs to be shown in Category listings (except for Folders listings). The media library update function can be set to Auto or Manual:

Auto runs an update every time after a computer connection has ended or a micro SD card has been inserted.

Manual only runs an update upon your request. This can be useful e.g. if an update takes a long time and you mostly browse by Folders.

To change the Auto / Manual setting, press OK or Right on Update Media Lib, Up / Down to choose between Auto and Manual, and OK to select (or Menu to cancel). The Manual setting sets the update to manual and runs an update immediately.

➤ Please wait patiently and do not push the M3's buttons while an update is running (indicated by progress % and progress bar). After scan is complete, "Completed" will be shown and the M3 will go back to the Now Playing screen in a few seconds.

## 3) Screen timeout (s)

No matter whether a song is playing or not, the M3's display turns off after the set delay (in seconds) specified in "Screen timeout (s)" if no buttons have been pressed on the M3 in that time period.

The screen timeout can be set to 10s, 20s, 30s, 40s, 50s, 60s or ON (screen always on).

Press OK on this option to show adjustment slider for screen timeout, Up / Down to adjust the timer and OK to confirm change (or Menu to cancel).

## 4) Brightness

Brightness of display can be adjusted in 10 steps from 1 to 10.

Press OK on this option to show adjustment slider for brightness, Up / Down to adjust the brightness value and OK to confirm change (or Menu to cancel).

## 5) Idle poweroff time (min.)

If no song is playing or song playback is paused, the M3 powers off after the set delay (in minutes) specified in "Idle poweroff" if no buttons have been pressed on the M3 in that time period.

The Idle poweroff timer can be set to 2 to 30 minutes in 9 steps.

Press OK on this option to show adjustment slider for Idle power time (min.), Up / Down to adjust the time and OK to confirm change (or Menu to cancel).

## 6) Sleep timer (min.)

Use this option to set a timer for the player to power off after the specified number of minutes, regardless of music playing or button presses on the M3. This is useful e.g. as a timer for listening at bedtime.

The Sleep timer can be set to Off or 10 to 120 minutes in 12 steps.

Press OK on this option to show adjustment slider for Sleep timer (min.), Up / Down to adjust the time and OK to start the timer (or Menu to cancel).

- After the sleep timer is set, a clock icon will appear on the status bar on top of the display.
- The sleep timer will reset to off after it has triggered (turned the M3 off).

## 7) Theme

There are two themes available: Theme 1 and Theme 2. From the Categories menu screen, hold the Menu button to enter Quick Menu, choose System settings > Theme to enter theme selection interface. Use the Up and Down button to choose the theme as needed then press the OK button to complete setting.

## 8) Screen-off button response

There are three modes of Screen-off button responses: Direct action, Screen wakeup only and Wake + action. From the Categories Menu, hold the Menu button to enter Quick Menu. Select the System settings then enter the Screen-off button response, use the up and down buttons to choose the mode as needed and press OK button to complete setting.

Under Direct action mode and screen off, press any button to realize corresponding function without turning on screen;

Under Screen wakeup only mode and screen off, press any button to turn on screen without corresponding operation;

Under Wake + action mode and screen off, press any button to realize corresponding function and turn on screen.

## 9) Player information

Select this option to display the following info on the M3 (in this order): player model, firmware version, internal storage (total size), internal storage (available size), micro SD card (total size), micro SD card (available size), number of songs stored, player serial number, and player NB code.

Press OK on this option to show this information, press Menu or OK to return to settings menu.

## 10) Format internal memory

Use this option to format the 8GB internal memory of the M3 (e.g. if it has been formatted into an incompatible format by mistake, when the M3 was connected to a computer).

Press OK on this option to show confirmation dialog, Up / Down to choose “✓” icon and press OK again to confirm and format the internal memory. Or press Menu to cancel.

- Please back up any songs and data stored in the internal memory before formatting, as all data will be deleted by formatting.
- The M3 will format the internal memory to FAT32 format; this is required for firmware updates.

## 11) Storage formatting (format micro SD card)

Use this option to format the micro SD card inserted into the M3 (e.g. if it is formatted in a format incompatible with the M3).

Press OK on this option to show confirmation dialog, Up / Down to choose “✓” icon and press OK again to confirm and format the micro SD card. Or press Menu to cancel.

- Please back up any songs and data stored in the micro SD card before formatting, as all data will be deleted by formatting.
- The M3 will format the micro SD card to FAT32 format.

## 12) Restore factory defaults

Use this option to reset all options on the M3 to factory defaults. Press OK on this option to show confirmation dialog, Up / Down to choose “✓” icon and press OK again to confirm and restore factory defaults. Or press Menu to cancel.

- You may try this option if your M3 encounters any unexpected malfunctions.

## 13) Auto upgrade

This is the option used for updating the M3's firmware. For instructions on firmware updates, please refer to section C. Firmware Updates.

# F. Tips on Usage

This section contains some useful tips for you to get the most out of your M3.

1. How to update the media library quickly with newly added songs?  
A: Set Settings→System Settings→UpdateMediaLib to Auto and the M3 will automatically update the media library every time the M3 finishes connection with a computer or a micro SD card is inserted.
2. How to play my favorite songs quickly?  
A: While your favorite songs are playing, hold Menu button to show Quick Menu and choose “+” to add the song to a playlist; you can then play your favorite songs from the playlists. (press Menu button briefly while music is playing, first option on top is Playlists)
3. How to turn on Resume mode to get back on the groove quickly  
A: Go to Settings→Play Settings→Resume mode and set it to “Song” or “Position” to have the M3 resume playback from the last song or the exact position where you left off when you turn on the M3 next time.
4. How to make transitions between songs smoother?  
A: Go to Settings→Play Settings→Fade in/Fade out and turn on this option for smoother transitions.
5. How to save power in case of temporary non-use and also get back to my favorite tunes quickly?  
A: Battery life is a matter that concerns users always. There are several functions on the M3 to save power:
  - a. Sleep Mode: set sleep mode to on when you enjoy the music at night for fear of forgetting to turn it off. Then it will turn itself off automatically after reaching the set duration. **Note that the sleep timer will reset to off after it is triggered once.**
  - b. Idle Poweroff: set the “Idle Poweroff time” to a suitable time so that if you pause the music and leave the player idle (not pressing any of its buttons), it will turn itself after the set time.

## G.FAQ

### 1. Charging

- 1) How may the M3 be charged?  
A: The M3 may be charged by any USB port or USB charger. Charging via a dedicated USB charger of DC 5V and 1A or above will be faster.
- 2) What is the charging current of the M3?  
A: About 300mA.



- 3) How long does it take to charge the M3?  
A: The M3 may be fully charged using a recommended DC 5V and 1A in about 2.5 hours.
- 4) Can the M3 be charged by a portable power bank?  
A: Yes.
- 5) Can I listen to songs on the M3 while charging it?  
A: Yes, but it is recommended to charge the M3 with it powered off for shorter charging time.
- 6) What if the M3 gets a bit hot while playing and charging at the same time?  
A: Don't worry about it—the bit of heat will do no damage to you or the M3. If you're worried about it, turn off the M3 for charging.
- 7) Can I use other micro USB cables to charge the M3?  
The supplied USB cable or a quality replacement is recommended. A poor quality USB cable can lead to slow charging or no charging.
- 8) Why is the battery indicator on the M3 not very accurate?  
A: The M3 estimates remaining battery capacity based on battery voltage; because battery voltage fluctuates while the M3 is drawing power playing music, etc., the battery gauge is not very accurate and is for reference only.
- 9) How to judge the charging status of the M3?  
A: The M3's backlit buttons flash red when charging.  
If the M3 is on, the battery icon on the top status bar of the display would cycle to indicate charging; if the M3 is off, a large battery icon would be displayed and cycle to indicate charging.
- 10) How to judge whether the M3's battery is full?  
A: If the M3 is on, the battery icon on the top status bar of the display would stop cycling and hold steady at full; if the M3 is off, the large battery icon shown when the screen is lit (e.g. by pressing the power button) would be holding steady at full and not be cycling. The backlit buttons would go out once M3 is fully charged.

## 2. Transferring songs

- 1) What computer operating systems does the M3 support?  
A: The M3 supports 32/64bit Windows XP / 7 / 8 / 10 and Mac OS X.
- 2) What USB ports does the M3 support?

A: The M3 supports USB 2.0 and all standards backwards-compatible with USB 2.0 (e.g. USB 3, and USB Type C via adapter cable)

3) What's the M3's data transfer speeds?

A: Transfer speeds depend on file format, file size, USB connection type and micro SD card speed class. On average, the M3's transfer speed is about 4.5MB/s.

4) How to transfer songs to the M3 and manage them from the computer?

A: The M3 is seen by the computer simply as two standard USB drives (internal storage and Micro SD card slot). Direct drag-and-drop file management and deletion are supported. No driver installation is required.

5) Does the M3 support Linux?

A: Theoretically yes, but Linux operating systems are many and varied, so we have not tested compatibility with all of them.

6) Why does my computer not recognize the M3?

A: Firstly, please check that the cable between the M3 and the computer is securely connected on both ends; if the problem persists, please restart the M3 and try another USB cable or computer. If the M3 cannot be connected to any computer using any cable, please contact [support@fiiio.net](mailto:support@fiiio.net) for support.

### 3. Firmware updates

1) How to check whether my M3 has the latest firmware?

A:

1. Your M3's current firmware version can be checked at Settings→System Settings→Player information.
2. The latest firmware for the M3 can be found at <http://www.fiiio.net/en/supports/36> under "Download" at the lower right.

2) How to update the M3's firmware?

A: Please refer to section C. Firmware updates of this User Guide. 😊

3) What to do if the update fails? Would my M3 be bricked?

A: The M3 should not be bricked during the cause of any firmware update attempt, as long as power does not fail during update (so charge the M3 fully before updating). In the rare case that the M3 is bricked, please contact [support@fiiio.net](mailto:support@fiiio.net) for assistance.

## 4. Storage

1) What cards do the M3 support?

A: The M3 supports micro SD cards (also known as TF cards), including SDHC and SDXC cards.

2) Is the M3 picky about cards?

A: The M3 has been tested to support major brands such as Sandisk and Kingston very well. It is beyond our ability to test every other brand out there, but any genuine card from a reputable brand should work with the M3. To prevent slow card speeds causing the M3 to stall while playing or be unable to play high bitrate lossless tracks, please use micro SD cards of Class 6 or above.

3) What size of cards does the M3 support?

A: The M3 is currently tested to support micro SD cards up to 64GB. It is recommended to format the card in FAT32 format.

4) How to format a micro SD card into FAT32 format?

A: Simply insert the micro SD card into the M3's card slot, and select Settings→System Settings→Storage formatting to format the card to FAT32 format using the M3;

Or, Insert the micro SD card to a card reader to connect to your computer, right-click on the micro SD card shown and choose "Format..." and follow the prompts to format the card to FAT32 format.

Also, Micro SD cards in 64G or 128G sizes cannot be formatted into FAT32 by the windows system, please try to use third party tool to format. You can download the specialized format tool (Guiformat) via <http://www.ridgecrop.demon.co.uk/index.htm?guiformat.htm> .

**Warning: all data and existing songs on the card will be deleted, please make backups on your computer first as necessary.**

5) Nothing from the micro SD card shows on the M3?

A:

1. The Categories listings (except the Folders listing) will not show any songs from a card unless and until a media library update has been performed. Go to Settings->System Settings->UpdateMediaLib, press OK to perform a manual media library update. Or use the Folders listing to confirm that the files on your card are recognized by the M3.

2. If neither of the above works to show the songs on your card:

i. Go to Settings->System Settings->Player information and check that the available size of the micro SD card you inserted is shown correctly (comparing it to the info shown on your computer); if not, try

formatting the card using the M3 (**this deletes all files on the card; please back up your data and music first**) and putting your files back on the card;

- ii. If this does not help, it is recommended that you try another card with the M3.

6) Some songs on the micro SD card don't show on the M3?

A:

- a. Have you performed a media library update after you last loaded songs onto the card? Go to Settings->System Settings->Update Media Lib, press OK to perform a manual media library update.
- b. If songs are still missing in the category listings (except in the Folders listings), please manually update the media library in system settings.
- c. Download the latest firmware on our website and update your M3 to the latest firmware.

7) How to clear the M3's media library database file?

- A: Delete the songs in internal storage, eject the micro SD card from the M3 and then update the media library manually. This will clear the database of records on songs on any SD card.

## 5. Playing music

1) Why does my .wav files not play?

- A: Please check using Foobar2000 or other capable software on the computer to see whether the wave file is actually DTS or Dolby encoded multi-channel audio, or perhaps a wave file of bit depth over 24 bits (32bit and 64bit files are not supported).

2) Why does my .ape files not play?

- A: APE comes in 5 levels of compression, including Fast, Normal, High, Extra High and Insane. Extra High and Insane encoded APEs are not supported while Normal and High encoded APEs are only supported at 48k/24bit or below.

3) Does the M3 support cue sheets?

- A: The M3 supports external cue sheets for identifying and playing a cue'd music file as separate tracks (applicable to APE and WAVE files only).

4) How to shuffle all songs on the M3 and not just an album / folder of songs?

- A: After updating the media library, go to the "All songs" category listing and choose a song to play, then set the play mode to shuffle to shuffle "All

songs”.

5) Why do my lyrics not show?

A: 1. The M3 only supports external .LRC files, named after the music file it lyricizes. 2. Choose the Lyrics instead of Cover in the Preferred display.

6) Why am I seeing rubbish characters?

A: Only ANSI, Unicode and UTF-8 (with and without BOM) encodings are supported for ID3 tags and .lrc files to be read by the M3. If the ID3 tags and / or lyrics files are encoded in an unsupported format, rubbish characters will be shown.

7) Why do my new songs not appear under any Category listing (except Folders)?

A: Please go to Settings->System Settings->Update Media Lib and press OK, select “Manual” and press OK to update the media library for new songs to be indexed under the Category listings. You may also set Update Media Lib to Auto for the M3 to update the library whenever you connect to the computer or insert a micro SD card. Also, your songs must have ID3 tag info for them to be identified in the Media library.

8) Why does the total number of songs displayed by the

A: The total number displayed by the M3 indicates the total number of files playable by the M3.

## 6. Other operations

1) How to get longer battery life for the M3?

A:

- a. Turn on “Idle poweroff”. When this is set to on, the player will turn itself off after the set time when no music is playing and the user does not press any buttons on the player.
- b. Lower the backlight brightness to reduce power consumption.
- c. Set the “Screen timeout” timer, so that the player turns off the screen automatically after the set delay when no buttons have been pressed.

2) Why is the M3 sometimes sluggish in responding?

A:

1. High bitrate lossless tracks, particularly APEs, take more hardware resources to decode, possibly causing slowdowns in the player UI. You may convert such APEs to FLACs or uncompressed WAVs using programs such as foobar2000 on the computer first to make it easier on the player. The sound quality will be the same.
2. Placing too many songs on the M3 may also contribute to slowdowns. Please limit the number of songs on the M3’s micro SD card where possible.

3. Placing non-music related files on M3's micro SD cards, such as videos and pictures, may cause the M3 to slow down while sifting through them looking for music files. It is recommended to dedicate the micro SD card on the M3 to music.
  4. Playing high bitrate files from slow micro SD card may cause stuttering. Class 6 or above genuine micro SD cards are recommended.
  5. Unpredictable ordering of files, such as placing several .ape and .cue files in the same directory. The following directory structure is recommended: create separate folders for albums by the same artist, and open subfolders within each artist folder to hold single albums in separate subfolders.
  6. A mixture of music files of several different codecs and sample rates may also slow down the player. It is recommended to place files of different codecs and sample rates into separate folders and to play files of the same type in sequence from these folders, to prevent the M3 from having to switch between different decoders frequently.
- 3) Why does the M3 get a bit hot in operation?
- A: The M3 utilizes an SoC with high clock speed, a separate DAC, and (also separately) a high power headphone amplifier, thus dissipating way more power than consumer DAPs typically performing computation, DAC and amplification all on the SoC. Apart from outputting more power to your headphones, a lot of this power is also dissipated as heat, thus causing the M3 to heat up slightly in operation; but this does not endanger the M3 or the listener in any way.